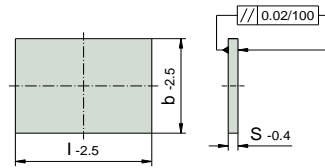
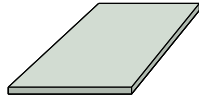


## N 50

Eristyslevy P = 600 N/mm<sup>2</sup>



Tilauskoodi:

1 kpl N50 95/95/3

Erikoislevyjä tilauksesta

Käyttölämpötila: 200° C

Lämmönjohto: 0,19 W/mk

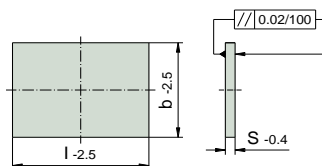
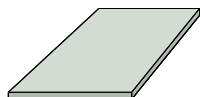
Tiheys: 1,9 g/cm<sup>3</sup>

b	l	S	D	Preis €
95	95	3	-	
100	130			
156	156			
	196			
	246			
190	246			
196	196			
	246			
206	156			
	196			
95	95	5		
100	130			
156	156			
	196			
	246			
	296			
	396			
190	246			
	296			
196	196			
	246			
	296			
	346			
206	156			
	196			
218	246			
	296			
246	246			
	296			
	346			
	396			
254	246			
276	246			
126	156	6		
	246			
156	156			
	196			
	206			
	246			
	296			
	346			
	396			
	446			

b	l	S	D	Preis €
196	196	6	-	
	206			
	246			
	296			
	346			
	396			
	446			
	496			
216	246			
	296			
	396			
246	246			
	266			
	296			
	346			
	396			
	446			
	496			
266	296			
	346			
	396			
196	296	7		
	346			
	396			
218	396			
	246			
	296			
246	296			
	346			
	396			
	446			
254	246			
276	296			
296	296			
	346			
	396			
	446			
	546			
346	346			
	396			
	446			
	496			
	546			

## N 50

Eristyslevy P = 600 N/mm<sup>2</sup>



Tilauskoodi:

1 kpl N50 396/396/7

Erikoislevyjä tilauksesta

Käyttölämpötila: 200° C

Lämmönjohto: 0,19 W/mk

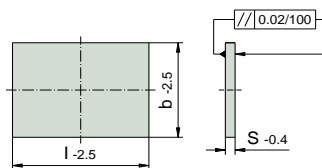
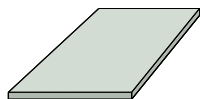
Tiheys: 1,9 g/cm<sup>3</sup>

b	l	S	D	Preis €
396	396	7	-	
	446			
	496			
	546			
496	546			
296	296	8		
	346			
	396			
	446			
	496			
	546			
	596			
	646			
	696			
346	346			
	396			
	446			
	496			
	546			
	596			
	646			
	696			
396	396			
	446			
	496			
	546			
	596			
	646			
	696			
	796			
446	446			
	496			
	546			
	596			
	646			
	696			
	796			
496	496			
	546			
	596			
	646			
	696			

b	l	S	D	Preis €
496	796	8	-	
546	546			
	596			
	646			
	696			
	796			
596	596			
	646			
	696			
	796			
	896			
	996			
646	646			
	696			
	796			
	896			
	996			
696	696			
	746			
	796			
	896			
	996			
746	796			
	896			
	996			
796	796			
	846			
	896			
	996			
846	896			
	996			

## N 50

Eristyslevy P = 600 N/mm<sup>2</sup>



Tilauskoodi:

1 kpl N50 246/496/8,5

Erikoislevyjä tilauksesta

Käyttölämpötila: 200° C

Lämmönjohto: 0,19 W/mk

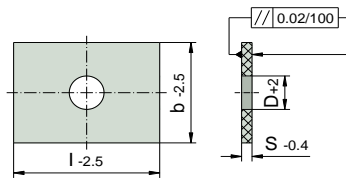
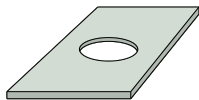
Tiheys: 1,9 g/cm<sup>3</sup>

b	l	S	D	Preis €
246	496	8,5	-	
296	296			
	346			
	396			
	446			
	496			
	546			
	596			
	696			
346	346			
	396			
	446			
	496			
	546			
	596			
	696			
396	396			
	446			
	496			
	546			
	596			
	696			
	796			
	896			
446	446			
	496			
	546			
	596			
	696			
	796			
	896			
496	496			
	546			
	596			
	696			
	796			
	896			
	996			

b	l	S	D	Preis €
546	546	8,5	-	
596	596			
	646			
	696			
	796			
	896			
	996			
596	596			
	696			
	796			
646	596			
	696			
	796			
	896			
	996			
696	696			
	796			
	896			
	996			
796	796			
	896			
	996			
896	896			
	996			

## N 51

Eristyslevy P = 600 N/mm<sup>2</sup>



Tilauskoodi:

1 kpl N51 95/95/3/22

Erikoismittoja tilauksesta

Käyttölämpötila: 200° C

Lämmönjohto: 0,19 W/mk

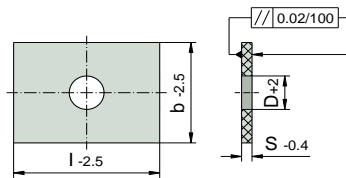
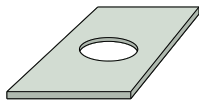
Tiheys: 1,9 g/cm<sup>3</sup>

b	l	S	D
95	95	3	22
100	130		22
156	156		90
	196		90
	246		90
190	246		90
196	196		90
206	246		90
	156		90
	196		90
95	95	5	22
100	130		22
156	156		90
	196		90
	246		90
	296		90
	396		90
190	246		90
	296		90
196	196		90
	246		90
	296		90
	346		90
206	156		90
	196		90
218	246		90
	296		90
	396		90
246	246		90
	296		90
	346	90	
	396	90	
254	246	90	
276	246	90	

b	l	S	D
126	156	6	90
156	246		90
	156		90
	196		90
	206		90
	246		90
196	246		90
	296		90
	346		90
	396		90
	446		90
	496		90
	196		196
216	206		90
	246		90
	296		90
246	396		90
	246		90
	266	90	
	296	90	
	346	90	
266	346	90	
	396	90	
	446	90	
	496	90	
	546	90	
266	596	90	
	296	90	

## N 51

Eristyslevy P = 600 N/mm<sup>2</sup>



Tilauskoodi:

1 kpl N51 196/296/7/90

Erikoismittoja tilauksesta

Käyttölämpötila: 200° C

Lämmönjohto: 0,19 W/mk

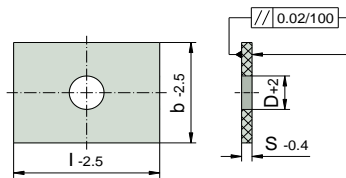
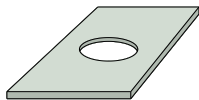
Tiheys: 1,9 g/cm<sup>3</sup>

b	l	S	D	
196	296	7	90	
	346		90	
	396		90	
	446		90	
218	396		90	
246	246		90	
	296		90	
	346		90	
	396		90	
	446		90	
254	246		90	
276	296		90	
296	296		90	
	346		90	
	396		90	
	446		90	
346	346		90	
	396		90	
	446		90	
	496		90	
	546		90	
396	396		90	
	446		90	
	496		90	
	546		90	
496	546		90	
296	296	8	90	
	346		90	
	396		90	
	446		90	
	496		90	
	546		90	
	596		90	
	646		90	
	696		90	

b	l	S	D	
346	346	8	90	
	396		90	
	446		90	
	496		90	
	546		90	
	596		90	
	646		90	
	696		90	
	796		90	
396	396		90	
	446		90	
	496		90	
	546		90	
	596		90	
	646		90	
	696		90	
	796		90	
446	446		90	
	496		90	
	546		90	
	596		90	
	646		90	
	696		90	
	796		90	
496	496		90	
	546		90	
	596		90	
	646		90	
	696		90	
	796		90	
546	546		90	
	596		90	
	646		90	
	696		90	
	796		90	
596	596		90	
	646		90	
	696		90	
	796		90	
646	646		90	
	696		90	
	796		90	

## N 51

Eristyslevy P = 600 N/mm<sup>2</sup>



Tilauskoodi:

1 kpl N51 246/496/8,5/90

Erikoismittoja tilauksesta

Käyttölämpötila: 200° C

Lämmönjohto: 0,19 W/mk

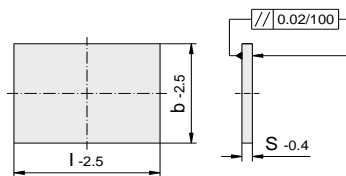
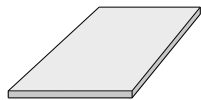
Tiheys: 1,9 g/cm<sup>3</sup>

b	l	S	D	
246	496	8,5	90	
296	296		90	
	346		90	
	396		90	
	446		90	
	496		90	
	546		90	
	596		90	
346	696		90	
	346		90	
	396		90	
	446		90	
	496		90	
	546		90	
	596		90	
396	696		90	
	796		90	
	396		90	
	446		90	
	496		90	
	546		90	
	596		90	
446	696		90	
	796		90	
	896		90	
	446		90	
	496		90	
	546		90	
	596		90	
496	696		90	
	796		90	
	896		90	
	996		90	
	496		90	
	546		90	
	596		90	

b	l	S	D		
546	546	8,5	90		
596	596		90		
	646		90		
	696		90		
	796		90		
	896		90		
	996		90		
	596	596		90	
646	696		90		
	796		90		
	896		90		
	996		90		
	646	596		90	
	696		90		
	796		90		
696	896		90		
	996		90		
	696	696		90	
	796		90		
	896		90		
	996		90		
	796	796		90	
896	896		90		
	996		90		
	896	896		90	
	996		90		
	896	896		90	
	996		90		
	896	896		90	

## N 52

Eristyslevy P = 330 N/mm<sup>2</sup>



Tilauskoodi:

1 kpl N52 95/95/3

Erikoismittoja tilauksesta

Käyttölämpötila: 230° C

Lämmönjohto: 0,13 W/mk

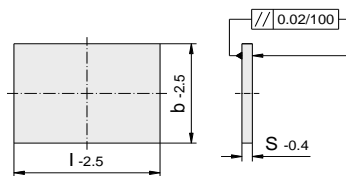
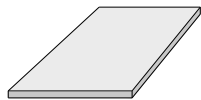
Tiheys: 1,6 g/cm<sup>3</sup>

b	l	S	D
95	95	3	-
100	130		
156	156		
	196		
	246		
	296		
	396		
190	246		
	296		
196	196		
	246		
	296		
	346		
206	156		
	196		
218	246		
	296		
246	246		
	296		
254	246		
276	246		
296	296		
	296		
95	95	5	
100	130		
156	156		
	196		
	246		
	296		
	396		
190	246		
	296		
196	196		
	246		
	296		
	346		
	396		
	446		
206	156		
	196		
218	246		
	296		
	396		

b	l	S	D
246	246	5	-
	296		
	346		
	396		
	446		
	496		
254	246		
276	246		
296	296		
	346		
	396		
	446		
	496		
	546		
346	346		
	396		
	446		
	496		
396	546		
	396		
	446		
	496		
126	156	6	
156	246		
	156		
	196		
	206		
	246		
	296		
	346		
	396		
	446		
	196	196	
206			
246			
296			
346			
396			
206	396		
	446		
	496		
	216	246	
	296		

## N 52

Eristyslevy P = 330 N/mm<sup>2</sup>



Tilauskoodi:

1 kpl N52 216/396/6

Erikoismittoja tilauksesta

Käyttölämpötila: 230° C  
Lämmönjohto: 0,13 W/mk  
Tiheys: 1,6 g/cm<sup>3</sup>

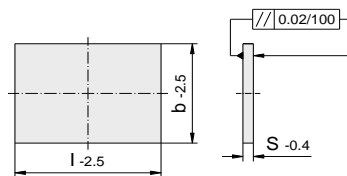
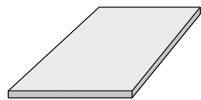
b	l	S	D
216	396	6	-
246	246		
	266		
	296		
	346		
	396		
	446		
	496		
	546		
	596		
266	296		
196	296	7	
	346		
	396		
	446		
218	396		
246	246		
	296		
	346		
	396		
	446		
254	246		
276	296		
296	296		
	346		
	396		
	446		
346	346		
	396		
	446		
	496		
	546		
396	396		
	446		
	496		
	546		
496	546		
296	296	8	
	346		
	396		
	446		
	496		
	546		

b	l	S	D
296	596	8	-
	646		
	696		
346	346		
	396		
	446		
	496		
	546		
	596		
	646		
	696		
	796		
396	396		
	446		
	496		
	546		
	596		
	646		
	696		
	796		
446	446		
	496		
	546		
	596		
	646		
	696		
	796		
496	496		
	546		
	596		
	646		
	696		
	796		
546	546		
	596		
	646		
	696		
	796		
596	596		
	646		
	696		
	796		
	896		



## N 52

Eristyslevy P = 330 N/mm<sup>2</sup>



Tilauskoodi:

1 kpl N52 596/996/8

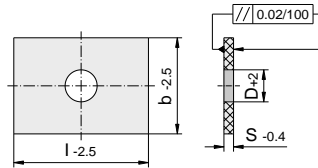
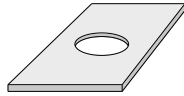
Erikoismittoja tilauksesta

Käyttölämpötila: 230° C  
Lämmönjohto: 0,13 W/mk  
Tiheys: 1,6 g/cm<sup>3</sup>

b	l	S	D		b	l	S	D	
596	996	8	-		396	796	8,5	-	
646	646					896			
	696				446	446			
	796					496			
	896					546			
	996					596			
696	696					696			
	746					796			
	796					896			
	896				496	496			
	996					546			
746	796					596			
	896					696			
	996					796			
796	796					896			
	846					996			
	896				546	546			
	996					596			
846	896					646			
	996					696			
246	496	8,5				796			
296	296					896			
	346					996			
	396				596	596			
	446					696			
	496					796			
	546					896			
	596					996			
	696				646	596			
346	346					696			
	396					796			
	446					896			
	496					996			
	546				696	696			
	596					796			
	696					896			
	796					996			
396	396				796	796			
	446					896			
	496					996			
	546				896	896			
	596					996			
	696								

## N 53

Eristyslevy P = 330 N/mm<sup>2</sup>



Tilauskoodi:

1 kpl N53 95/95/3/22

Erikoismittoja tilauksesta

Käyttölämpötila: 230° C  
Lämmönjohto: 0,13 W/mk

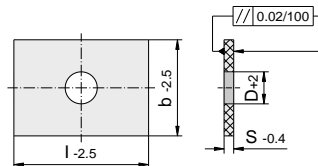
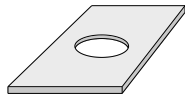
Theys: 1,6 g/cm<sup>3</sup>

b	l	S	D	
95	95	3	22	
100	130		22	
156	156		90	
	196		90	
	246		90	
	296		90	
	396		90	
190	246		90	
	296		90	
196	196		90	
	246		90	
	296		90	
	346		90	
206	156		90	
	196		90	
218	246		90	
	296		90	
246	246		90	
	296	90		
254	246	90		
276	246	90		
	296	90		
296	296	90		
95	95	5	22	
100	130		22	
156	156		90	
	196		90	
	246		90	
	296		90	
	396		90	
190	246		90	
	296		90	
196	196		90	
	246		90	
	296		90	
	346		90	
	396		90	
	446		90	
	496		90	
	546		90	
206	156		90	
	196		90	

b	l	S	D	
218	246	5	90	
	296		90	
	396		90	
246	246		90	
	296		90	
	346		90	
	396		90	
	446		90	
254	246		90	
	276		90	
	296		90	
296	296		90	
	346		90	
	396		90	
	446		90	
	496		90	
	546		90	
346	346		90	
	396	90		
	446	90		
	496	90		
396	396	90		
	446	90		
	496	90		
126	156	6	90	
	246		90	
156	156		90	
	196		90	
	206		90	
	246		90	
	296		90	
	346		90	
	396		90	
	446		90	

## N 53

Eristyslevy P = 330 N/mm<sup>2</sup>



Tilauskoodi:

1 kpl N53 196/196/6

Erikoismittoja tilauksesta

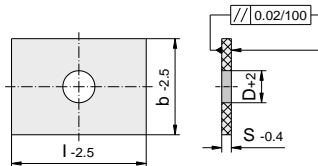
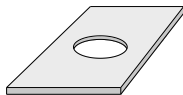
Käyttölämpötila: 230° C  
Lämmönjohto: 0,13 W/mk  
Tiheys: 1,6 g/cm<sup>3</sup>

b	l	S	D
196	196	6	90
	206		90
	246		90
	296		90
	346		90
	396		90
	446		90
	496		90
216	246		90
	296		90
	396		90
246	246		90
	266		90
	296		90
	346		90
	396		90
	446		90
	496		90
	546		90
	596		90
266	296		90
196	296	7	90
	346		90
	396		90
	446		90
218	396		90
246	246		90
	296		90
	346		90
	396		90
	446		90
254	246		90
276	296		90
296	296		90
	346		90
	396		90
	446		90
346	346		90
	396		90
	446		90
	496		90
	546		90
396	396		90

b	l	S	D
396	446	7	90
	496		90
	546		90
496	546		90
296	296	8	90
	346		90
	396		90
	446		90
	496		90
	546		90
	596		90
	646		90
	696		90
	796		90
346	346		90
	396		90
	446		90
	496		90
	546		90
	596		90
	646		90
	696		90
	796		90
396	396		90
	446		90
	496		90
	546		90
	596		90
	646		90
	696		90
	796		90
446	446		90
	496		90
	546		90
	596		90
	646		90
	696		90
	796		90
496	496		90
	546		90
	596		90
	646		90
	696		90
	796		90

## N 53

Eristyslevy P = 330 N/mm<sup>2</sup>



Tilauskoodi:

1 kpl N53 546/546/8/90

Erikoismittoja tilauksesta

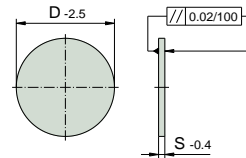
Käyttölämpötila: 230° C  
Lämmönjohto: 0,13 W/mk  
Theys: 1,6 g/cm<sup>3</sup>

b	l	S	D
546	546	8	90
	596		90
	646		90
	696		90
	796		90
596	596		90
	646		90
	696		90
	796		90
646	646		90
	696		90
	796		90
246	496	8,5	90
296	296		90
	346		90
	396		90
	446		90
	496		90
	546		90
	596		90
	696		90
346	346		90
	396		90
	446		90
	496		90
	546		90
	596		90
	696		90
	796		90
396	396		90
	446		90
	496		90
	546		90
	596		90
	696		90
	796		90
	896		90

b	l	S	D
446	446	8,5	90
	496		90
	546		90
	596		90
	696		90
	796		90
	896		90
496	496		90
	546		90
	596		90
	696		90
	796		90
	896		90
	996		90
546	546		90
	596		90
	646		90
	696		90
	796		90
	896		90
	996		90
596	596		90
	696		90
	796		90
	896		90
	996		90
646	596		90
	696		90
	796		90
	896		90
	996		90
696	696		90
	796		90
	896		90
	996		90
796	796		90
	896		90
	996		90
896	896		90
	996		90

## N 54

Eristyslevy P = 600 N/mm<sup>2</sup>



Tilauskoodi:

1 kpl N54 95/3

Erikoismittoja tilauksesta

Käyttölämpötila: 200° C

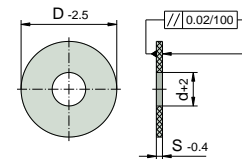
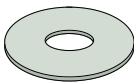
Lämmönjohto: 0,19 W/mk

Tiheys: 1,9 g/cm<sup>3</sup>

S	D	
3	95	
	116	
	156	
5	156	
	196	
	246	
	296	
7	344	

## N 55

Eristyslevy P = 600 N/mm<sup>2</sup>



Tilauskoodi:

1 KPL N55 95/3/22

Erikoismittoja tilauksesta

Käyttölämpötila: 200° C

Lämmönjohto: 0,19 W/mk

Tiheys: 1,9 g/cm<sup>3</sup>

S	d	D	
3	22	95	
	90	156	
5	90	156	
		196	
		246	
		296	
7	90	344	